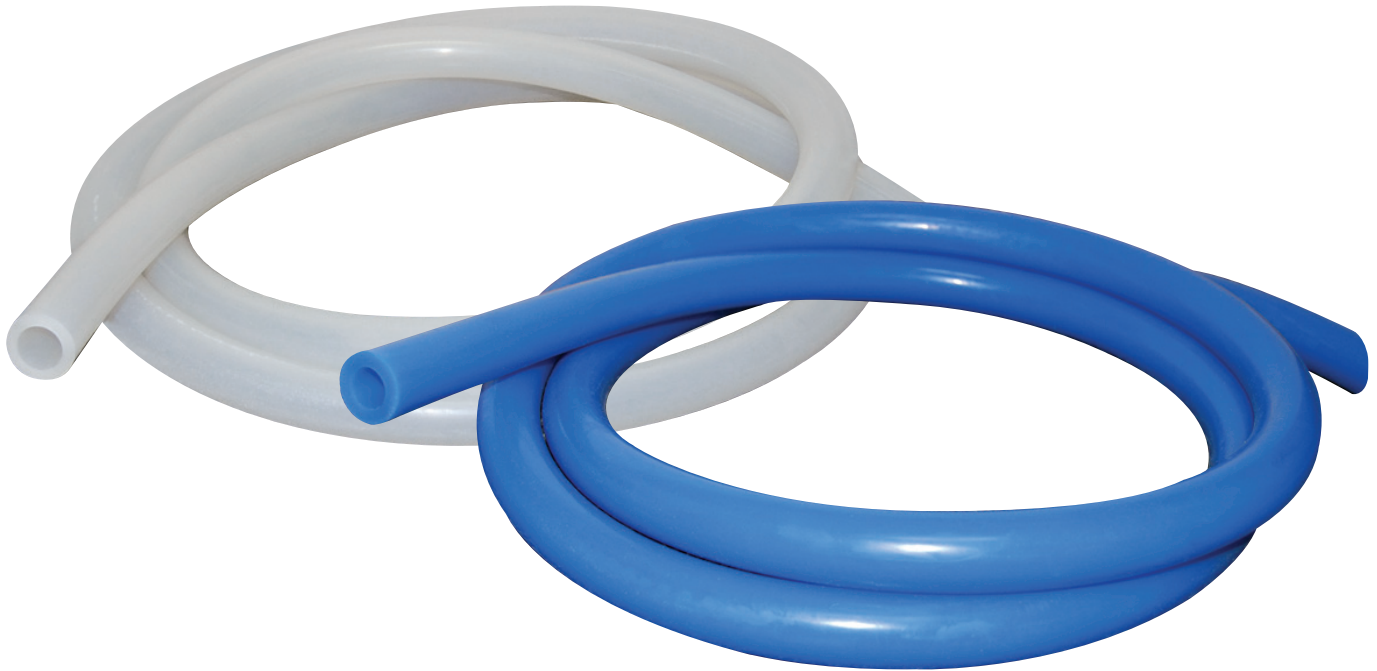




# SILICONE DAIRY TUBING



Silicone is as strong as plastic and more flexible than rubber even at -20°F. Due to tightly bonded, non-reactive pure resins, silicone stays resilient and translucent longer than plastic tubing, even after being cleaned regularly with boiling wash water. Blue tubing has a clean look and resists discoloration from iodine.

---

<b>ST1632</b>	1/2" ID 3/4" OD Silicone Tubing. 18 lbs./100 ft.
<b>ST1832</b>	9/16" ID 15/16" OD Silicone Tubing. 30 lbs./100 ft.
<b>ST2032</b>	5/8" ID 1" OD Silicone Tubing. 32 lbs./100 ft.
<b>STB2032</b>	5/8" ID 1" OD Blue Silicone Tubing.
<b>ST2432</b>	3/4" ID 13/16" OD Silicone Tubing. 40 lbs./100 ft.
<b>STB2432</b>	3/4" ID 13/16" OD Blue Silicone Tubing.
<b>ST2832</b>	7/8" ID 13/8" OD Silicone Tubing. 51 lbs./100 ft.
<b>STB2832</b>	7/8" ID 13/8" OD Blue Silicone Tubing.

---

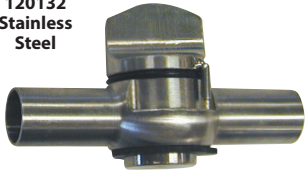
<b>ST0832</b>	Silicone Twin Vacuum Tubing, 1/4" ID, 1/8" wall. 19 lbs./100 ft.
<b>ST0932</b>	Silicone Twin Vacuum Tubing, 9/32" ID 1/8" wall. 21 lbs./100 ft.
<b>STB0932</b>	Blue Silicone Twin Vacuum Tubing, 9/32" ID 1/8" wall. 21 lbs./100 ft.





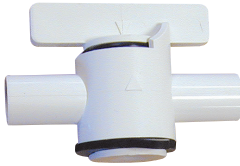
# Shut-Off Valves • Positive On-Off Stop • Handy Tabbed Gaskets

**120132**  
Stainless  
Steel



Stainless steel shut-off valve with full 5/8" opening. Beautifully machined with mirror-smooth finish. For 9/16" and 5/8" tubing.  
**120132** S.S. Shut-Off Valve. Wt. 9 oz.

**CV7101**  
White  
Plastic



Smooth white plastic shut-off valve twists cleanly to a positive stop. Facilitates shut-off of vacuum or milk flow with Transflow or rubber tubing.  
**CV7101** White Plastic Shut-Off Valve, non-vented.  
**CV7102** White Plastic Shut-Off Valve, vented.

**Delrin**  
Valve



Delrin Shut-off valves feature positive on-off and are made of popular smooth approved Delrin material. Wt. 3 oz.  
**100-0033** Valve for 5/8", vented.  
**100-0034** Valve for 5/8", non-vented.  
**100-0035** Valve for 3/4", vented.  
**100-0036** Valve for 3/4", non-vented.



## Air-Operated Pinch Valves



**8532**



**47003**



**27768**

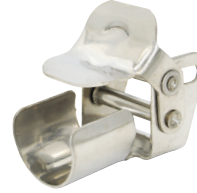
Pinch Valves are air-operated shut-offs that work by pinching the tubing. The Boot Cover, Valve Strap and Mounting Bracket may be used with either Pinch Valve.

**8532** Pinch Valve with 5/32" push fitting for up to 7/8" ID, including Boot Cover and Mounting Bracket.

**47003** Pinch Valve with 3/16" barbed fitting for up to 5/8" ID, including Valve Strap.

**27768** Pinch Valve with 5/32" push fitting for up to 5/8" ID, including Boot Cover. Order Mounting Bracket, 3558471, separately.

## Snap Clamps



Choose Stainless Steel or Plastic Snap Clamps for tubing shut-off.  
**140105** S.S. Snap Clamp for up to 1" OD. 4 oz.  
**140113** S.S. Snap Clamp for up to 1-3/16" OD. 4 oz.  
**171060** Plastic Snap Clamp for up to 1-3/8" OD.



## Vacuum Operated Shut-Off Valves

**48000**



**48000** Vacuum-Operated Plastic Valve for 5/8" ID, always open when under vacuum

**5529007**



**5529007** Vacuum-Operated Plastic Shut-off for 5/8" ID

**47004**



**47004** Vacuum-Operated Shut-off Valve, Stainless Steel, for 5/8" hose

**179-4393**



**179-4393** Vacuum-Operated Shut-off Valve, 5/8" - 3/4". 1 lb.

## Support Spring for Silicone Tubing



Stainless Steel Support Spring is used to reinforce silicone tubing at the connections to prevent cracking. Fits 5/8" ID Tubing.

**1572083** Support Spring, 5.5" long, 1-1/4" OD.

## Vacuum Repair Splice



Vacuum Line Connectors are for quick in-line repair of 3/8" ID Vacuum Hose.

**1900050** Vacuum Line Connectors, sold each.



## Tubing Cutters



Kwikcut Hand Tubing Cutters are well-designed for ease of use and safety. Made of tough nylon with sharp steel replaceable blade, Kwikcut, works well on rubber and plastic tubing, thin wall PVC pipe and schedule 40 PVC pipe, making a clean cut with no burrs or sawdust. Blade rests in closed jaws for safety. Individually carded with instructions.

**T100** Kwikcut Cutter for tubing or PVC up to 1-1/4" OD. Teflon-coated steel blade.

**S200** Kwikcut Cutter for tubing and PVC pipe up to 1-7/8" OD. Stainless steel blade.



The Coburn Company, Inc. • P O Box 147 • Whitewater, WI 53190 U.S.A.

800 776 7042

262 473 2822

coburn.com

info@coburn.com